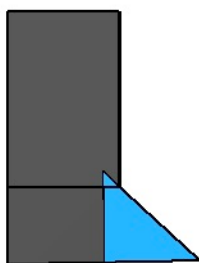


# Corner Flash™ Pig Ear Fold Method for Recessed Windows

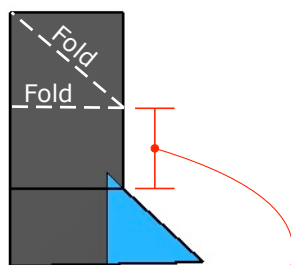
Supported by the Fortishield 15 year warranty when correctly used. See details.

Developed by TLS Laboratories in Laguna Niguel, CA

GS 108A piece  
Out of the box

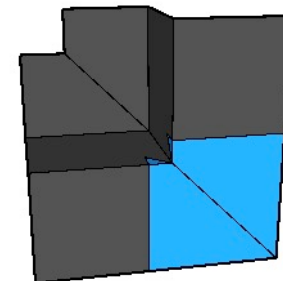
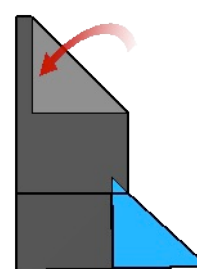


GS 108A piece  
Fold Line

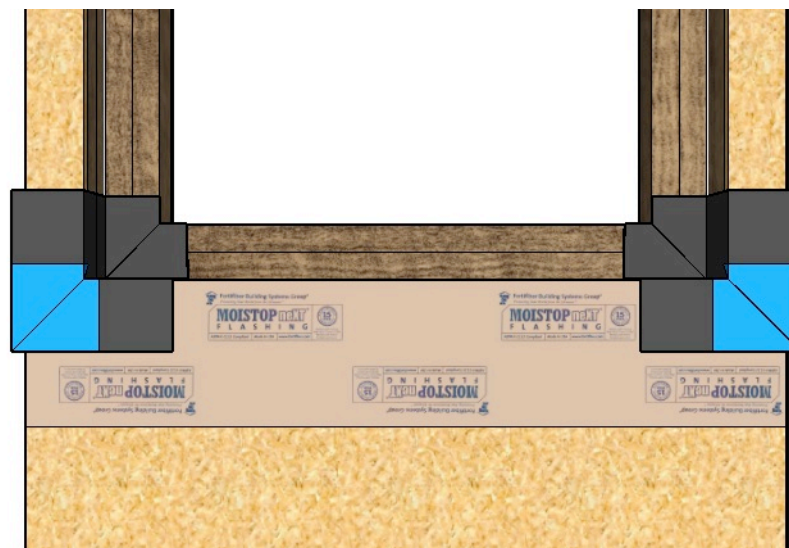
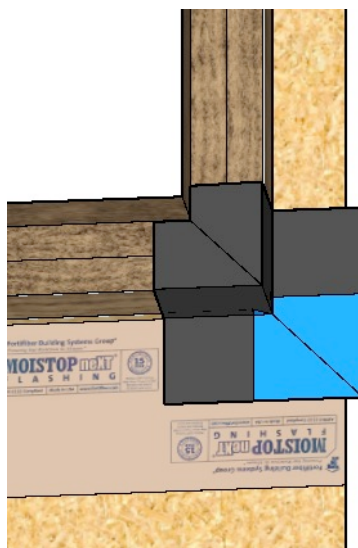
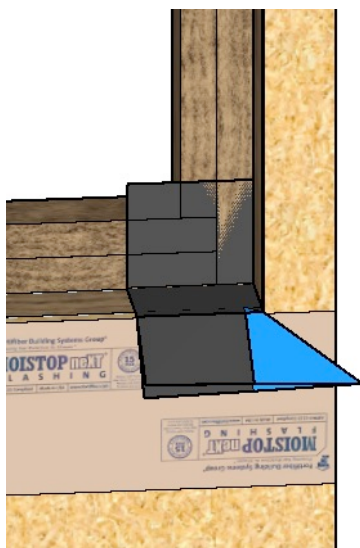


Depth of Recess  
Opening

GS 108A piece  
Folded and Unfolded



Direct the folded tail upwards.



**Fortifiber Building  
Systems Group®**

*Protecting Your World from the Elements®*

This system is designed for use with the  
GS 108A, GS 112A or GS 114A

**Corner Flash™** system.

Add 4" to the depth of your recess opening and  
select the next larger size of **Corner Flash™**  
product.

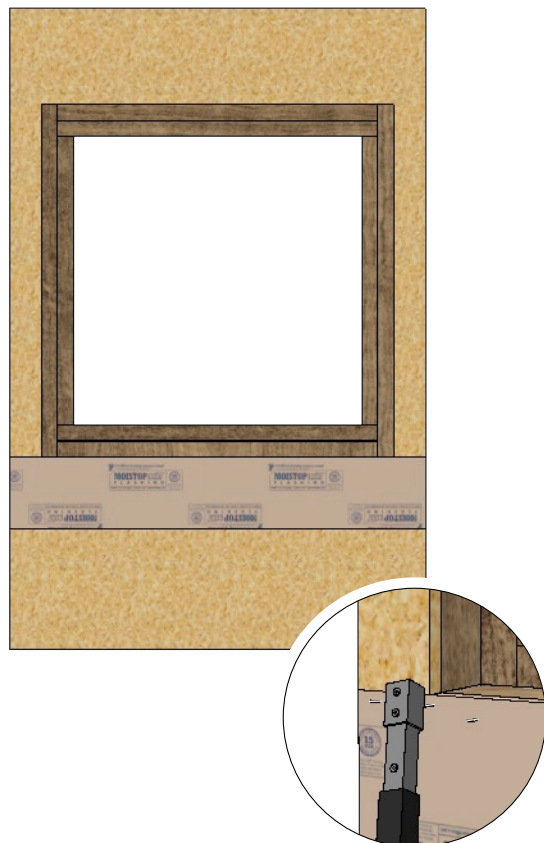
PERFORMANCE TESTED



800.310.7673  
949.348.9291  
info@TLSLabs.com  
www.tlslabs.com

## STEP 1

Apply bib/apron to the lower edge.

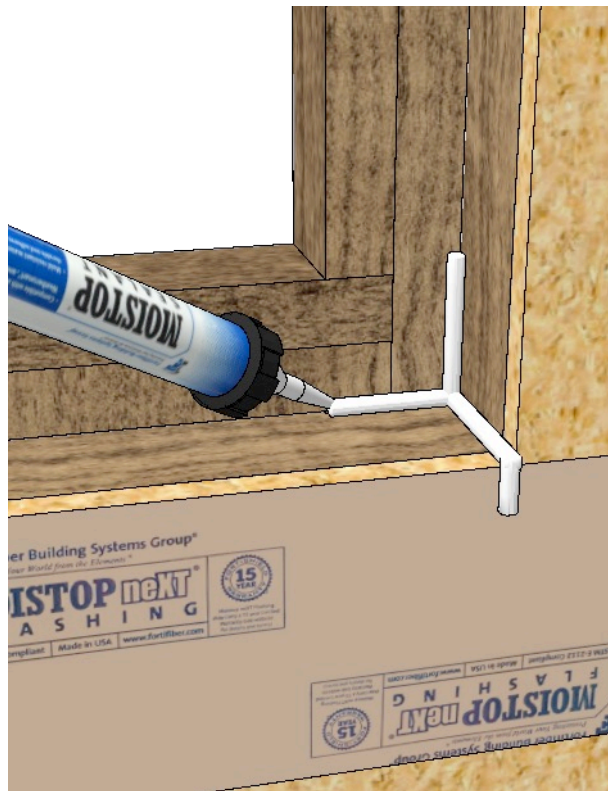


NOTE:

Use staples across the top edge of the apron so that the bottom may be lifted upwards.  
Use **Moistop Next** Nail On Flashing for the apron.

## STEP 2

Apply sealant to the lower corners

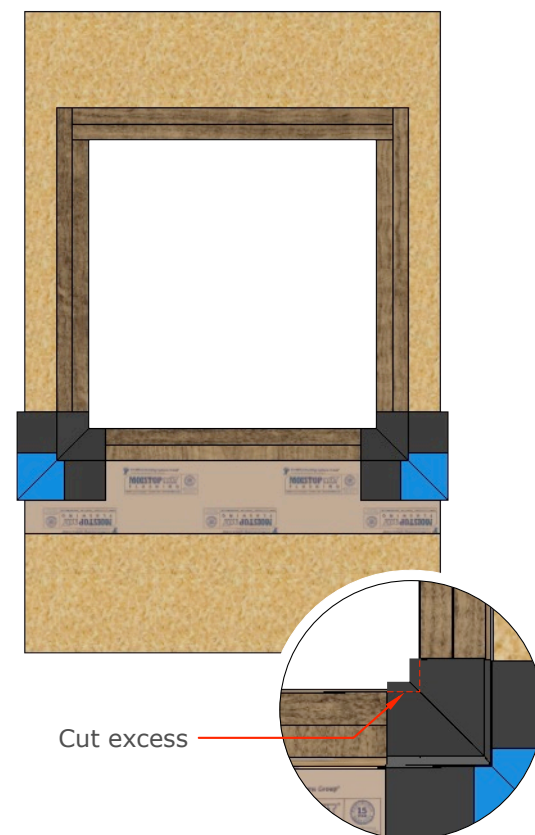


NOTE:

Use **Moistop Sealant** as shown in the drawing above.

## STEP 3

Apply **Corner Flash**™  
Corners into wet sealant



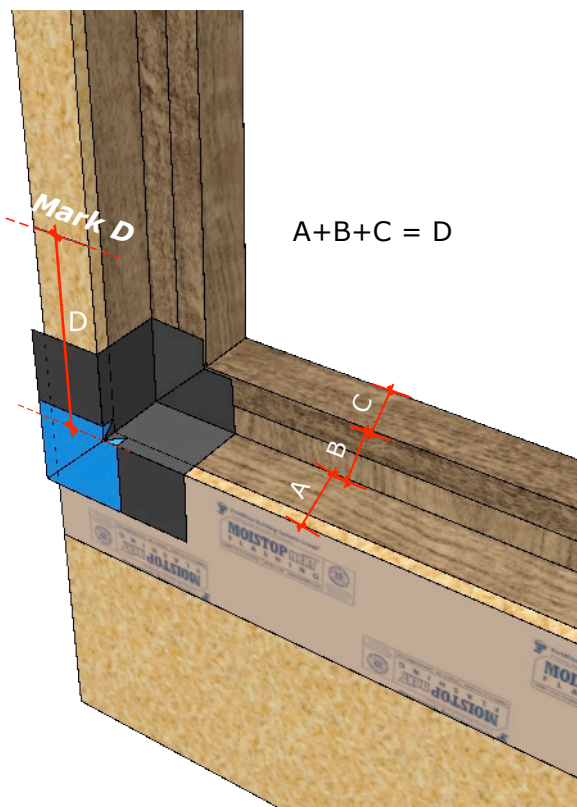
Cut excess

NOTE:

After the Pig Ear fold has been correctly applied, press the **Corner Flash**™ corners into the wet sealant and secure with staples.  
If excess **Corner Flash**™ extends into the RO simply trim it with a razor knife.

## STEP 4

Mark the framing for the next step



NOTE:

Correct marking of the framing will ensure the **Fortiflash 40** will terminate correctly under the window. Take 3 measurements as shown above. Mark the framing with the sum of your dimensions upwards from the edge of the recess opening.

## STEP 5

Apply Fortiflash 40

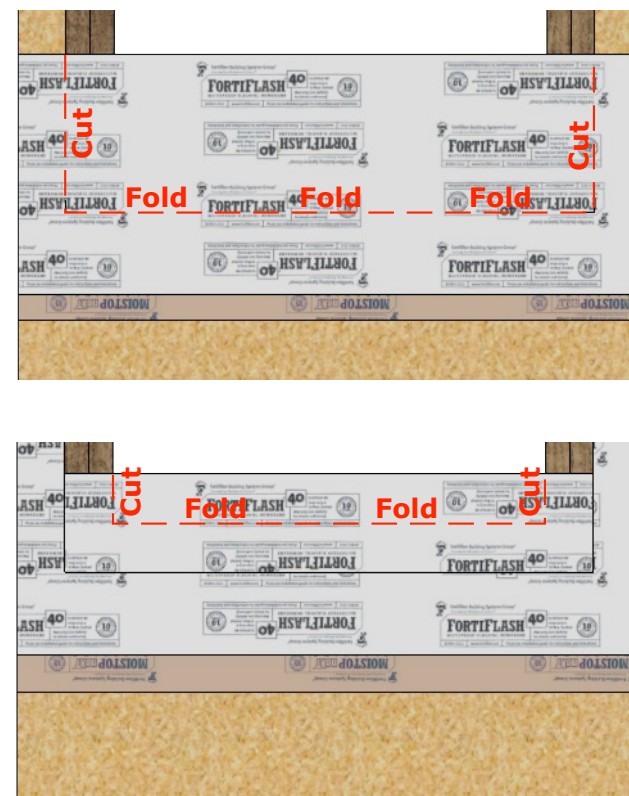


NOTE:

Apply **Fortiflash 40** as shown. Completely span the opening with the **Fortiflash 40** after removing the release sheet. Secure top edge with staples. J Roll **Fortiflash 40** on to the framing.

## STEP 6

Cut and fold



NOTE:

Apply two vertical cuts in the **Fortiflash 40** as shown in the drawing above. Fold the center of the **Fortiflash 40** into place upon the framing and **Corner Flash™**. Be careful to avoid wrinkles. Place two more vertical cuts in the **Fortiflash 40** and fold the material on to the framing sill.

## Progress!

Correct application should look like this so far



NOTE:

The materials correctly layered into place should look like this.

## STEP 7

End Dams

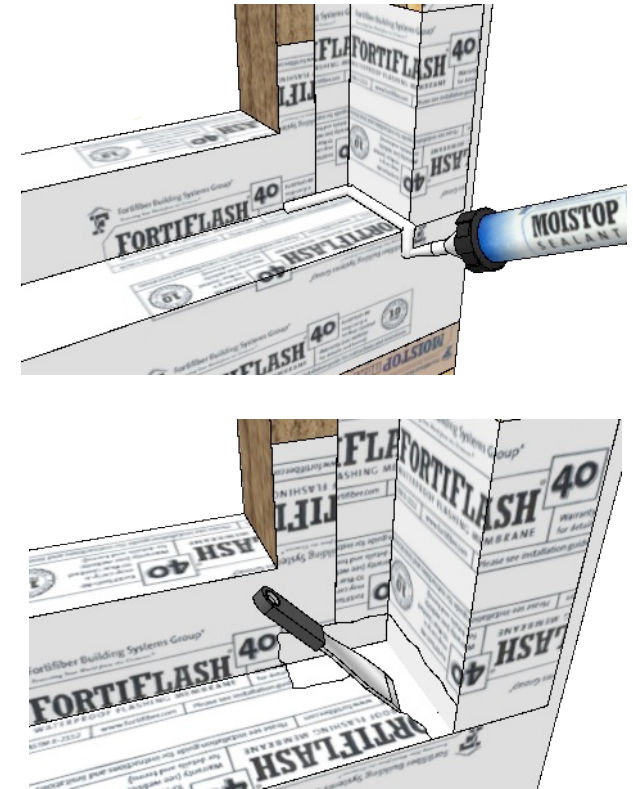


NOTE:

Cut 2 squares of **Fortiflash 40** and apply to the lower right and left corners as shown.  
The dimensions of the squares depend on the depth of your recess.  
9" x 9" squares will work on recesses up to 4" deep.

## STEP 8

Apply Moistop Sealant

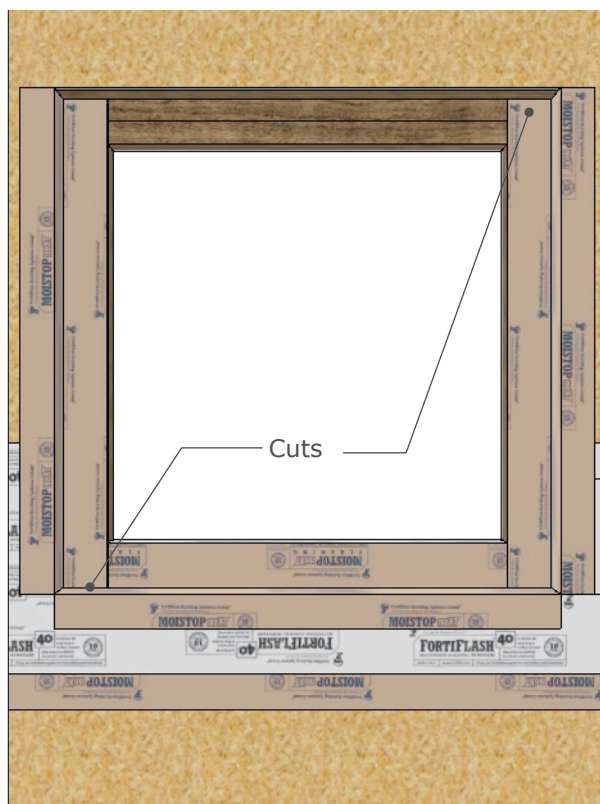


NOTE:

Apply **Moistop Sealant** to the lower edges of the end dams and butter into place with a putty knife or other flat tool.

## STEP 9

### Apply Moistop *Next* Flashing

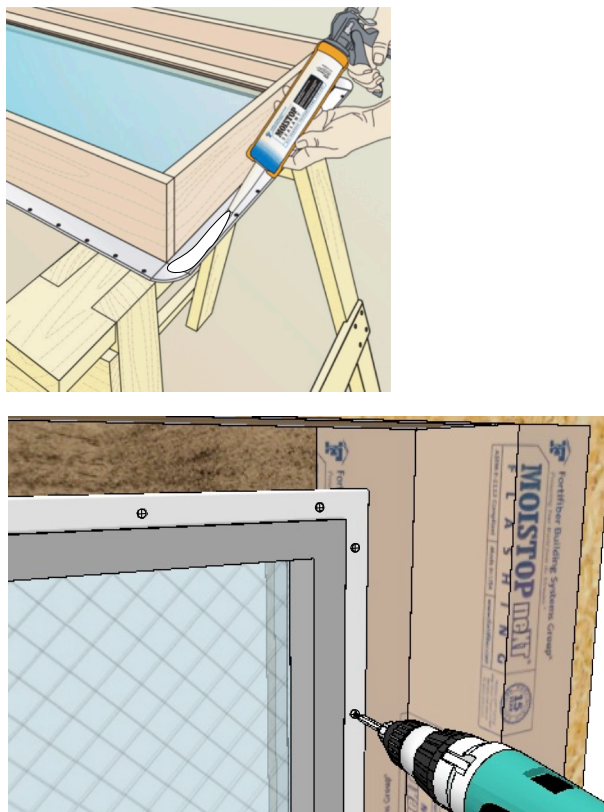


NOTE:

Apply **Moistop Next** Flashing as shown. Cut ends as shown. Do not allow excess to bunch up in the corners. Optional products are **EZ Seal** and **Fortiflash**.

## STEP 10

### Install window

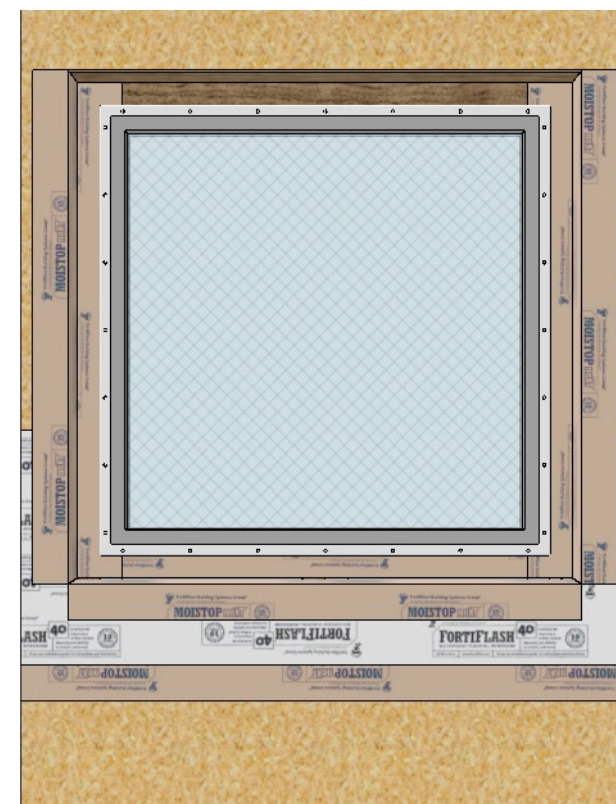


NOTE:

Apply a 3/8" - 1/2" bead of Moistop sealant to the outside edge of the window nail fin. If pre-punched holes are present, cover them with sealant. If the nail fin is not integral to the window, apply the sealant to the nail fin connection to the window; Usually a pivot joint.

## STEP 11

### Fasten window

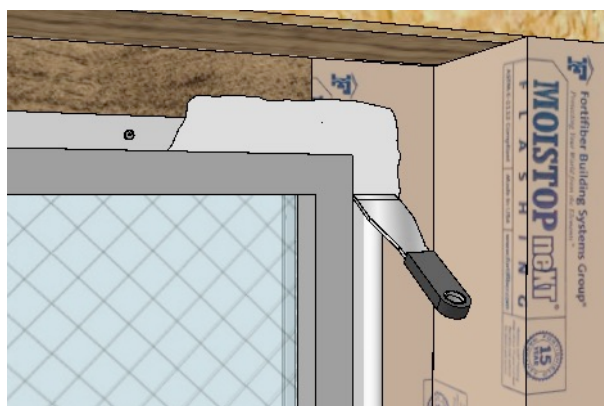
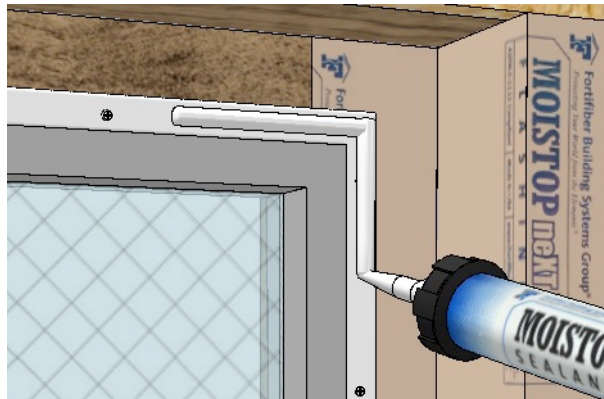
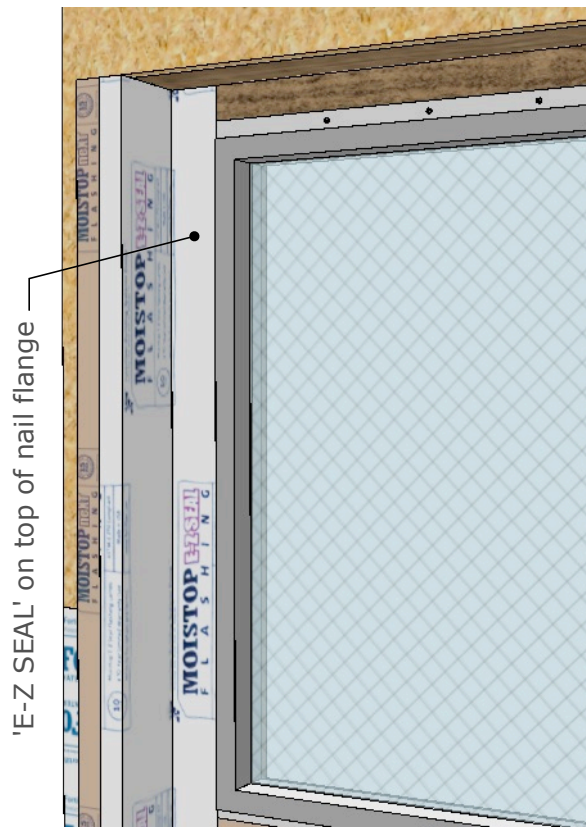


NOTE:

Fasten the window per manufacturers instructions. In the absence of instructions, apply exterior pan head 1-5/8" screws at 8-12" OC. Install window level, square and plumb.

## STEP 12

APPLY  
MOISTOP 'E-Z SEAL' -OR- BUTTERED SEALANT



NOTE: If EZ Seal

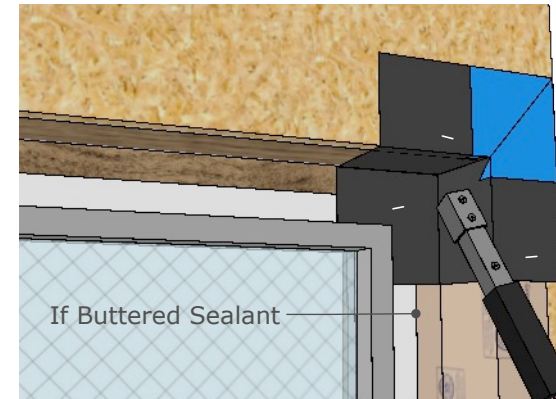
NOTE: If Buttered Sealant

Option 1- EZ Seal method:  
Apply Moistop EZ Seal on top of the side nail fins.  
Carefully layer the EZ Seal into place avoiding wrinkles.  
Terminate the top and bottom without bunching up materials.  
At the edge of the EZ Seal against the window frame apply a small bead of Moistop sealant and tool into place.

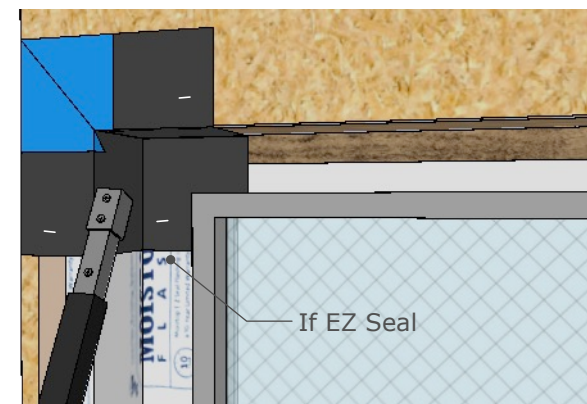
Option 2- Buttered sealant method:  
Apply 3/8"- 1/2" cap bead of sealant on top of the nail fin and butter flat. Correctly applied the sealant will extend 1" away from the nail fin and up to the frame of the window.  
Cover all pre-punched holes and cracks with sealant.

## STEP 13

Apply Top Corners



If Buttered Sealant



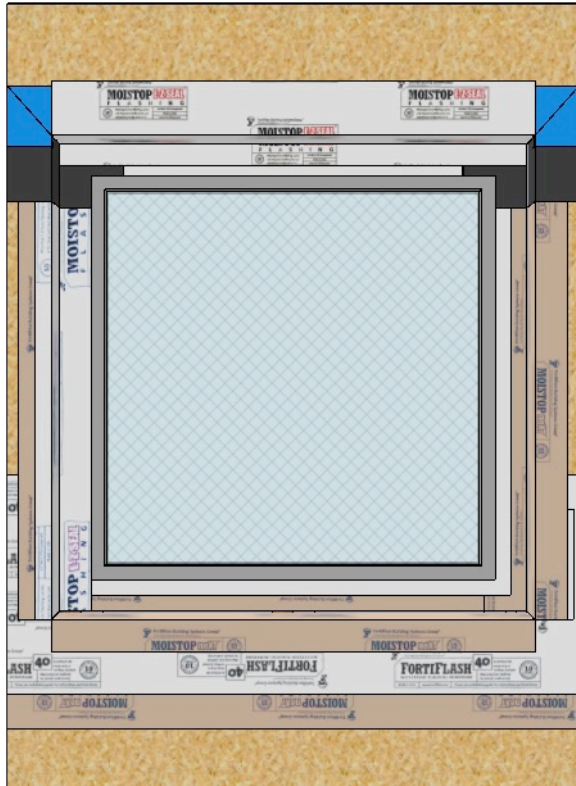
If EZ Seal

NOTE:

Using the Pig Ear Fold method described earlier, press both top corners into wet sealant.

## STEP 14

Apply EZ Seal across the top

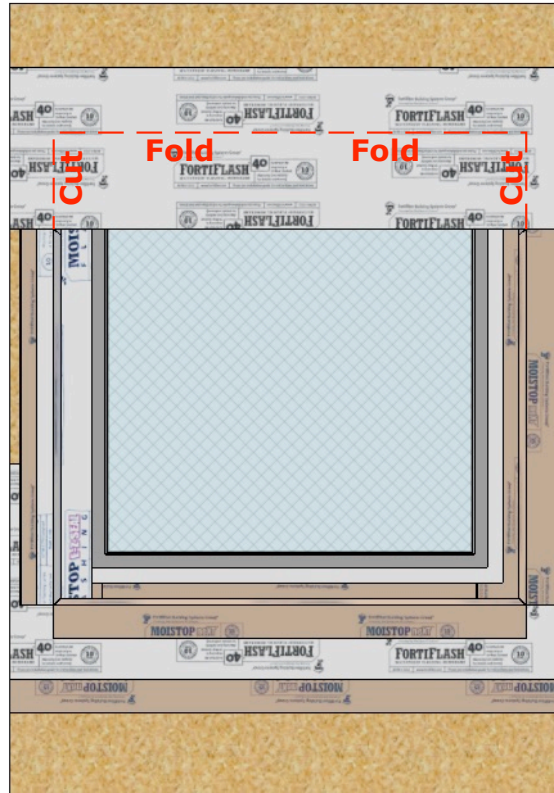


NOTE:

Apply **EZ Seal** on the **Top Nail Fin** as shown.  
This is an **optional step** that provides extra protection.  
This ensures termination of materials on the top nail fin are correct.

## STEP 15

Apply Top Flashing

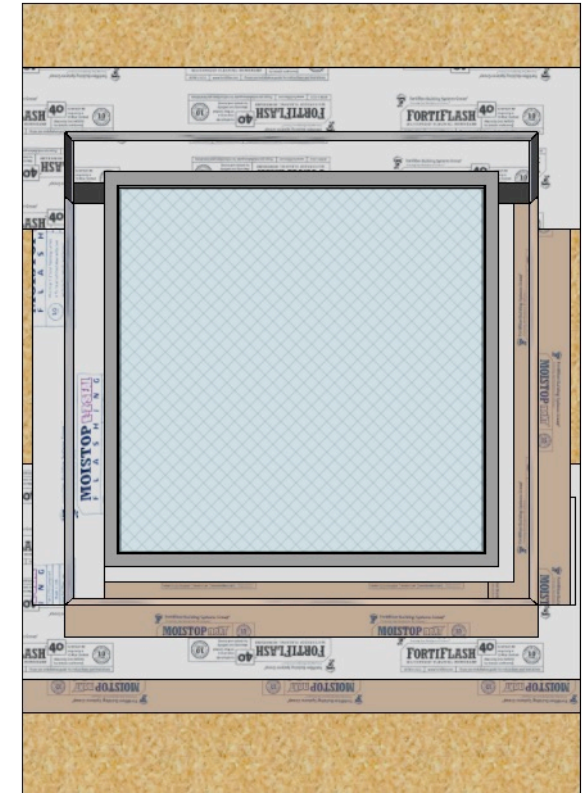


NOTE:

Mark the framing to terminate the **Fortiflash 40** onto the top nail fin.  
Span the **Fortiflash 40** across the opening as shown. Secure the top edge with staples.  
Apply 2 vertical cuts as shown.  
Fold the **Fortiflash 40** into the recess where it should terminate correctly on top of the nail fin.

## You are Done!

J Roll materials



NOTE:

This is how your finished assembly should look.